

piano 1

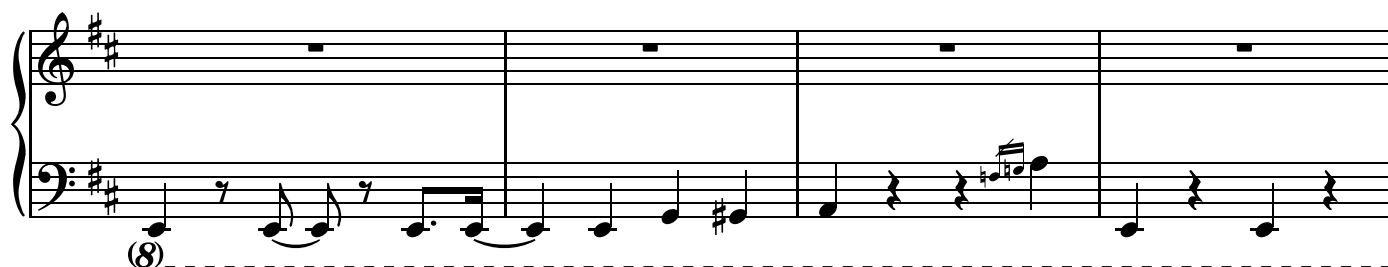
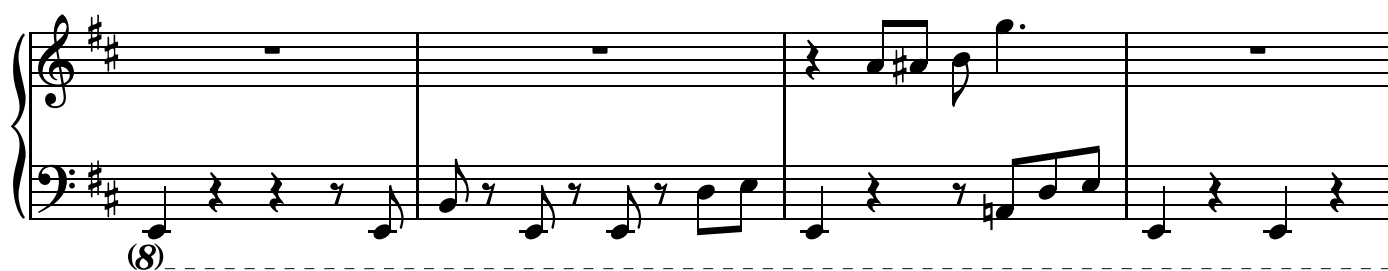
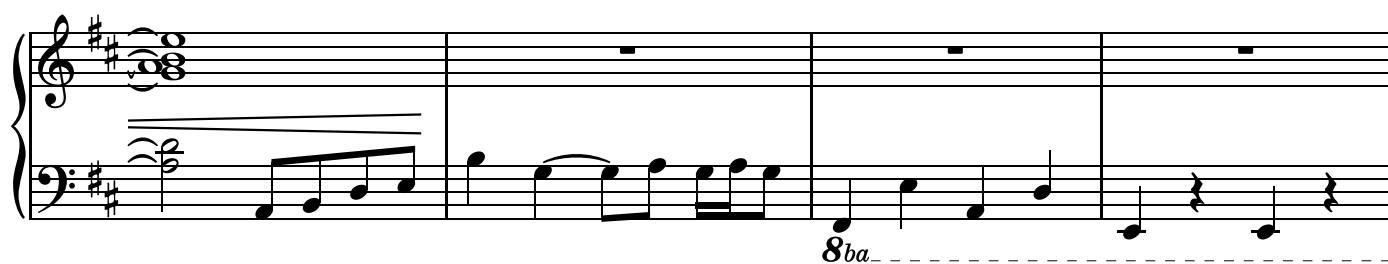
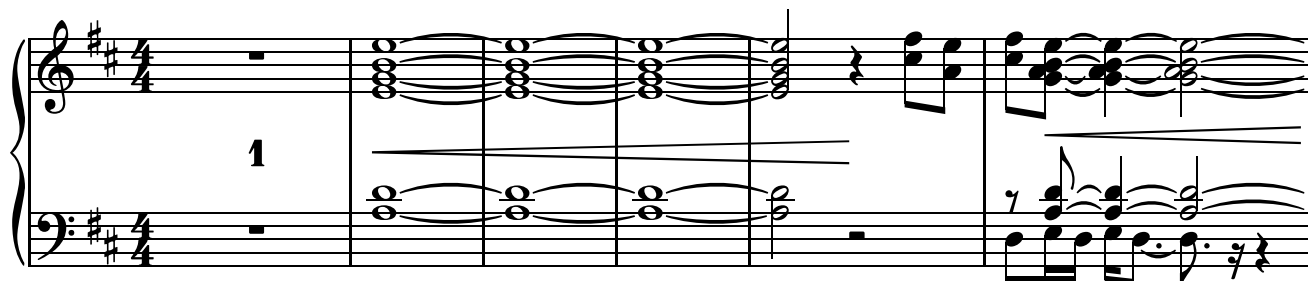
Cat Attack Part 1

菅野よう子「Kanno Youko」

arranged by Ron "duVillage" van Dorp

カウボーイビバップ「Cowboy Bebop」

♩ = 211



System 1 of musical notation for piano 1. The system consists of two staves. The upper staff is in treble clef with a key signature of two sharps (F# and C#). The lower staff is in bass clef with the same key signature. The music begins with a whole rest in the upper staff and a quarter note G2 in the lower staff. The lower staff continues with a series of eighth and quarter notes, including a triplet of eighth notes (A2, B2, C#3) and a quarter note D3. The system ends with a quarter rest in the lower staff.

System 2 of musical notation for piano 1. The system consists of two staves. The upper staff is in treble clef with a key signature of two sharps (F# and C#). The lower staff is in bass clef with the same key signature. The music begins with a whole rest in the upper staff and a quarter note G2 in the lower staff. The lower staff continues with a series of eighth and quarter notes, including a triplet of eighth notes (A2, B2, C#3) and a quarter note D3. The system ends with a quarter rest in the lower staff.

System 3 of musical notation for piano 1. The system consists of two staves. The upper staff is in treble clef with a key signature of two sharps (F# and C#). The lower staff is in bass clef with the same key signature. The music begins with a whole rest in the upper staff and a quarter note G2 in the lower staff. The lower staff continues with a series of eighth and quarter notes, including a triplet of eighth notes (A2, B2, C#3) and a quarter note D3. The system ends with a quarter rest in the lower staff.

System 4 of musical notation for piano 1. The system consists of two staves. The upper staff is in treble clef with a key signature of two sharps (F# and C#). The lower staff is in bass clef with the same key signature. The music begins with a whole rest in the upper staff and a quarter note G2 in the lower staff. The lower staff continues with a series of eighth and quarter notes, including a triplet of eighth notes (A2, B2, C#3) and a quarter note D3. The system ends with a quarter rest in the lower staff.

System 5 of musical notation for piano 1. The system consists of two staves. The upper staff is in treble clef with a key signature of two sharps (F# and C#). The lower staff is in bass clef with the same key signature. The music begins with a whole rest in the upper staff and a quarter note G2 in the lower staff. The lower staff continues with a series of eighth and quarter notes, including a triplet of eighth notes (A2, B2, C#3) and a quarter note D3. The system ends with a quarter rest in the lower staff.

System 6 of musical notation for piano 1. The system consists of two staves. The upper staff is in treble clef with a key signature of two sharps (F# and C#). The lower staff is in bass clef with the same key signature. The music begins with a whole rest in the upper staff and a quarter note G2 in the lower staff. The lower staff continues with a series of eighth and quarter notes, including a triplet of eighth notes (A2, B2, C#3) and a quarter note D3. The system ends with a quarter rest in the lower staff.

